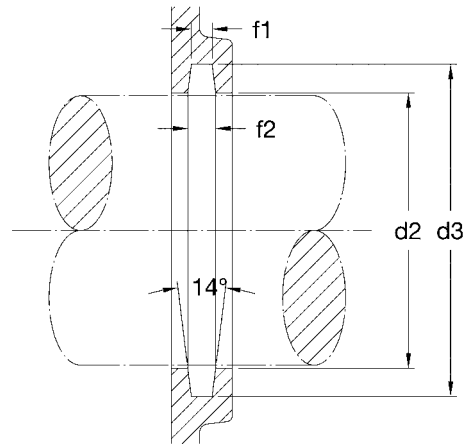
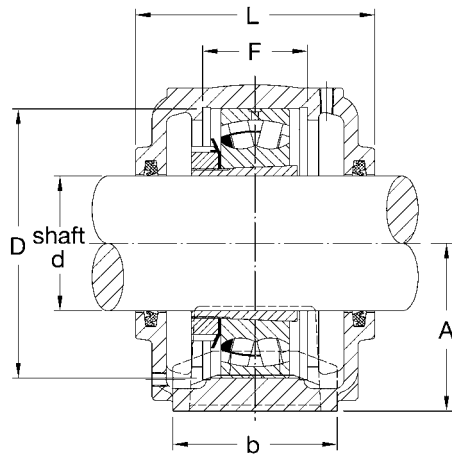


Housing No.	Dimensions mm														
	d	D H7	B	b	G	F H13	A h13	L	H	E	u	v	t	d2 H12	d3 H12
SN 3024	110	180	380	110	40	56	112	150	217	320	26	35	M20	113	135
SN 3026	115	200	410	120	45	62	125	160	240	350	26	35	M20	118	140
SN 3028	125	210	410	120	45	63	140	170	260	350	26	35	M20	128	154
SN 3030	135	225	445	130	50	66	150	175	283	380	28	38	M24	138	164
SN 3032	140	240	460	130	50	70	150	190	290	390	28	38	M24	143	173
SN 3034	150	260	530	160	60	77	160	200	310	450	33	42	M24	153	183
SN 3036	160	280	550	160	60	84	170	210	330	470	33	42	M24	163	193
SN 3038	170	290	550	160	60	85	170	210	335	470	33	42	M24	173	203
SN 3040	180	310	610	170	60	92	180	235	355	515	33	42	M24	183	213
SN 3044	200	340	690	190	70	100	200	255	405	580	40	52	M30	203	240

SN 3122	100	180	380	110	40	66	112	155	217	320	26	35	M20	102	125
SN 3124	110	200	410	120	45	72	125	165	240	350	26	35	M20	113	135
SN 3126	115	210	410	120	45	74	140	170	260	350	26	35	M20	118	140
SN 3128	125	225	445	130	50	78	150	180	283	380	28	38	M24	128	154
SN 3130	135	250	500	150	50	90	150	200	295	420	33	42	M24	138	164
SN 3132	140	270	530	160	60	96	160	215	315	450	33	42	M24	143	173
SN 3134	150	280	550	160	60	98	170	220	330	470	33	42	M24	153	183
SN 3136	160	300	610	170	70	106	180	230	355	520	33	42	M30	163	193
SN 3138	170	320	650	180	70	114	190	240	375	560	33	42	M30	173	203



f1	f2	ZF Seal	Bolt S	WT kg	Bearing No.	Adapter Sleeve	Felt Seal	Locating Ring		Housing No.
								Number	Q'ty	
8	10.7	ZF24	M24	17	23024K	H3024	FS524	SR180x10	1	<b>SN3024</b>
8	10.7	ZF26	M24	20	23026K	H3026	FS526	SR200x10	1	<b>SN3026</b>
9	12.2	ZF28	M24	25	23028K	H3028	FS528	SR210x10	1	<b>SN3028</b>
9	12.2	ZF30	M24	30	23030K	H3030	FS530	SR225x10	1	<b>SN3030</b>
10	13.7	ZF32	M24	36	23032K	H3032	FS532	SR240x10	1	<b>SN3032</b>
10	13.7	ZF34	M30	51	23034K	H3034	FS534	SR260x10	1	<b>SN3034</b>
10	13.7	ZF36	M30	54	23036K	H3036	FS536	SR280x10	1	<b>SN3036</b>
10	13.7	ZF38	M30	54	23038K	H3038	FS538	SR290x10	1	<b>SN3038</b>
10	13.7	ZF40	M30	61	23040K	H3040	FS540	SR310x10	1	<b>SN3040</b>
11	15.6	ZF44	M36	88	23044K	H3044	FS544	SR340x10	1	<b>SN3044</b>

8	10.8	ZF22	M24	18	23122K	H3122	FS522	SR180x10	1	<b>SN3122</b>
8	10.7	ZF24	M24	21	23124K	H3124	FS524	SR200x10	1	<b>SN3124</b>
8	10.7	ZF26	M24	26	23126K	H3126	FS526	SR210x10	1	<b>SN3126</b>
9	12.2	ZF28	M24	32	23128K	H3128	FS528	SR225x10	1	<b>SN3128</b>
9	12.2	ZF30	M30	40	23130K	H3130	FS530	SR250x10	1	<b>SN3130</b>
10	13.7	ZF32	M30	50	23132K	H3132	FS532	SR270x10	1	<b>SN3132</b>
10	13.7	ZF34	M30	57	23134K	H3134	FS534	SR280x10	1	<b>SN3134</b>
10	13.7	ZF36	M30	70	23136K	H3136	FS536	SR300x10	1	<b>SN3136</b>
10	13.7	ZF38	M30	85	23138K	H3138	FS538	SR320x10	1	<b>SN3138</b>