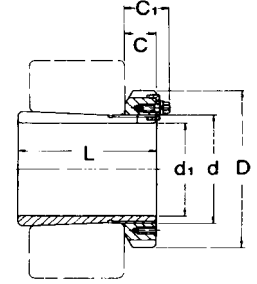
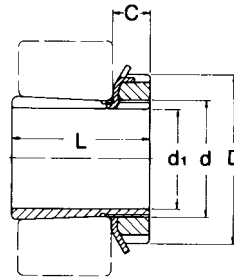
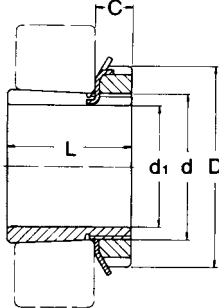
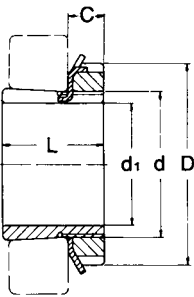


Series: H2 (HE, HS, HA)

H3 (HE, HS, HA)

Series:H23 (HE, HS, HA)



$d1 \leq 180\text{mm}$

$d1 > 180\text{mm}$

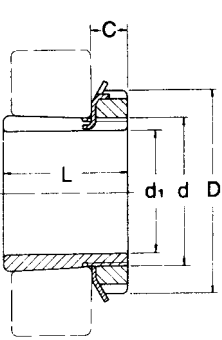
mm

No.	d	d1	L	D	C	AN/KM AW/MB	Weight (kg)
H 204	20	17	24	32	7	4	0.041
H 205	25	20	26	38	8	5	0.070
H 206	30	25	27	45	8	6	0.099
H 207	35	30	29	52	9	7	0.125
H 208	40	35	31	58	10	8	0.174
H 209	45	40	33	65	11	9	0.227
H 210	50	45	35	70	12	10	0.274
H 211	55	50	37	75	12	11	0.308
H 212	60	55	38	80	13	12	0.346
H 213	65	60	40	85	14	13	0.401
H 214	70	60	41	92	14	14	0.593
H 215	75	65	43	98	15	15	0.707
H 216	80	70	46	105	17	16	0.882
H 217	85	75	50	110	18	17	1.02
H 218	90	80	52	120	18	18	1.19
H 219	95	85	55	125	19	19	1.37
H 220	100	90	58	130	20	20	1.49
H 221	105	95	60	140	20	21	1.72
H 222	110	100	63	145	21	22	1.93
H 304	20	17	28	32	7	4	0.045
H 305	25	20	29	38	8	5	0.075
H 306	30	25	31	45	8	6	0.109
H 307	35	30	35	52	9	7	0.142
H 308	40	35	36	58	10	8	0.189
H 309	45	40	39	65	11	9	0.248
H 310	50	45	42	70	12	10	0.303
H 311	55	50	45	75	12	11	0.345
H 312	60	55	47	80	13	12	0.394
H 313	65	60	50	85	14	13	0.458
H 314	70	60	52	92	14	14	0.723
H 315	75	65	55	98	15	15	0.831
H 316	80	70	59	105	17	16	1.03
H 317	85	75	63	110	18	17	1.18
H 318	90	80	65	120	18	18	1.37
H 319	95	85	68	125	19	19	1.56

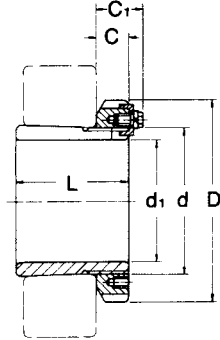
No.	d	d1	L	D	C	C1	AN/KM AW/MB	Weight (kg)
H 320	100	90	71	130	20	-	20	1.69
H 321	105	95	74	140	20	-	21	1.95
H 322	110	100	77	145	21	-	22	2.18
H 2304	20	17	31	32	7	-	4	0.049
H 2305	25	20	35	38	8	-	5	0.087
H 2306	30	25	38	45	8	-	6	0.126
H 2307	35	30	43	52	9	-	7	0.165
H 2308	40	35	46	58	10	-	8	0.224
H 2309	45	40	50	65	11	-	9	0.280
H 2310	50	45	55	70	12	-	10	0.362
H 2311	55	50	59	75	12	-	11	0.420
H 2312	60	55	62	80	13	-	12	0.481
H 2313	65	60	65	85	14	-	13	0.557
H 2314	70	60	68	92	14	-	14	0.897
H 2315	75	65	73	98	15	-	15	1.05
H 2316	80	70	78	105	17	-	16	1.28
H 2317	85	75	82	110	18	-	17	1.45
H 2318	90	80	86	120	18	-	18	1.69
H 2319	95	85	90	125	19	-	19	1.92
H 2320	100	90	97	130	20	-	20	2.15
H 2321	105	95	101	140	20	-	21	2.46
H 2322	110	100	105	145	21	-	22	2.74
H 2324	120	110	112	155	22	-	24	3.19
H 2326	130	115	121	165	23	-	26	4.60
H 2328	140	125	131	180	24	-	28	5.55
H 2330	150	135	139	195	26	-	30	6.63
H 2332	160	140	147	210	28	-	32	9.14
H 2334	170	150	154	220	29	-	34	10.2
H 2336	180	160	161	230	30	-	36	11.3
H 2338	190	170	169	240	31	-	38	12.6
H 2340	200	180	176	250	32	-	40	13.9
H 2344	220	200	186	280	35	44	44	16.7
H 2348	240	220	199	300	37	46	48	19.7
H 2352	260	240	211	330	39	49	52	24.2
H 2356	280	260	224	350	41	51	56	27.8

## Series: H30 (HE)

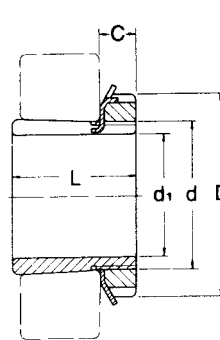
## Series: H31 (HE)



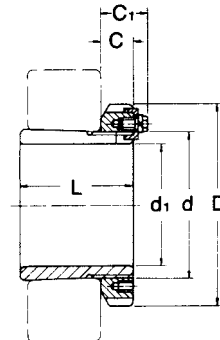
d1 ≤ 180mm



d1 > 180mm



d1 ≤ 180mm



d1 > 180mm

mm

No.	d	d1	L	D	C	C1	Weight (kg)
H 3024	120	110	72	145	22	-	1.93
H 3026	130	115	80	155	23	-	2.85
H 3028	140	125	82	165	24	-	3.16
H 3030	150	135	87	180	26	-	3.89
H 3032	160	140	93	190	28	-	5.21
H 3034	170	150	101	200	29	-	5.99
H 3036	180	160	109	210	30	-	6.83
H 3038	190	170	112	220	31	-	7.45
H 3040	200	180	120	240	32	-	9.19
H 3044	220	200	126	260	30	41	10.3
H 3048	240	220	133	290	34	46	13.2
H 3052	260	240	145	310	34	46	15.3
H 3056	280	260	152	330	38	50	17.7
H 3060	300	280	168	360	42	54	22.8
H 3064	320	300	171	380	42	55	24.6
H 3068	340	320	187	400	45	58	28.7
H 3072	360	340	188	420	45	58	30.5
H 3076	380	360	193	450	48	62	35.8
H 3080	400	380	210	470	52	66	41.3
H 3084	420	400	212	490	52	66	43.7
H 3088	440	410	228	520	60	77	65.2
H 3092	460	430	234	540	60	77	69.5
H 3096	480	450	237	560	60	77	73.3
H 3120	100	90	76	130	20	-	1.80
H 3122	110	100	81	145	21	-	2.25
H 3124	120	110	88	155	22	-	2.64
H 3126	130	115	92	165	23	-	3.66
H 3128	140	125	97	180	24	-	4.34
H 3130	150	135	111	195	26	-	5.52

No.	d	d1	L	D	C	C1	Weight (kg)
H 3132	160	140	119	210	28	-	7.67
H 3134	170	150	122	220	29	-	8.38
H 3136	180	160	131	230	30	-	9.5
H 3138	190	170	141	240	31	-	10.8
H 3140	200	180	150	250	32	-	12.1
H 3144	220	200	161	280	35	-	14.7
H 3148	240	220	172	300	37	-	17.3
H 3152	260	240	190	330	39	-	22.0
H 3156	280	260	195	350	41	-	24.5
H 3160	300	280	208	380	40	53	30.2
H 3164	320	300	226	400	42	56	34.9
H 3168	340	320	254	440	55	72	49.5
H 3172	360	340	259	460	58	75	54.2
H 3176	380	360	264	490	60	77	61.7
H 3180	400	380	272	520	62	82	70.6
H 3184	420	400	304	540	70	90	84.2
H 3188	440	410	307	560	70	90	104
H 3192	460	430	326	580	75	95	116
H 3196	480	450	335	620	75	95	133
H 3260	300	280	240	380	40	53	34.1
H 3264	320	300	258	400	42	56	39.3
H 3268	340	320	288	440	55	72	54.6
H 3272	360	340	299	460	58	75	60.6
H 3276	380	360	310	490	60	77	69.6
H 3280	400	380	328	520	62	82	81.0
H 3284	420	400	352	540	70	90	94.0
H 3288	440	410	361	560	70	90	118
H 3292	460	430	382	580	75	95	132
H 3296	480	450	397	620	75	95	152

- H3044 and larger sizes are fitted with nut ANL44/HM3044 and washer ALL44/MS3044 and up.
- H3144 and larger sizes are fitted with nut AN44/HM3144 and up.
- H3160 and larger sizes are fitted with nut AL60/MS3160 and up.
- Larger size than H3296 is also available.