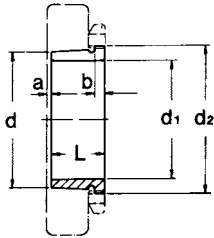
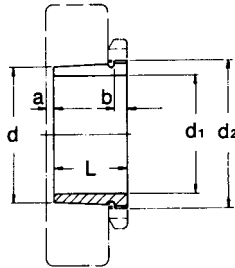


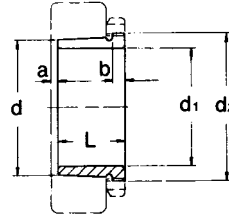
Series: **AH2**



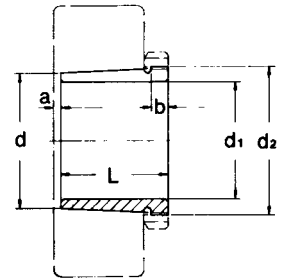
AH3



AH23



AH30



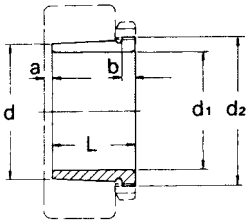
mm

No.	d	d ₁	L	b	a	d ₂	Weight (kg)
AH 208	40	35	25	6	2	M 45x1.5	0.081
AH 209	45	40	26	6	3	M 50x1.5	0.095
AH 210	50	45	28	7	3	M 55x2	0.114
AH 211	55	50	29	7	3	M 60x2	0.132
AH 212	60	55	32	8	3	M 65x2	0.161
AH 213	65	60	32.5	8	3.5	M 75x2	0.213
AH 214	70	65	33.5	8	3.5	M 80x2	0.240
AH 215	75	70	34.5	8	3.5	M 85x2	0.259
AH 216	80	75	35.5	8	3.5	M 90x2	0.284
AH 217	85	80	38.5	9	3.5	M 95x2	0.314
AH 218	90	85	40	9	4	M100x2	0.351
AH 219	95	90	43	10	4	M105x2	0.403
AH 220	100	95	45	10	4	M110x2	0.481
AH 222	110	105	50	11	4	M120x2	0.547
AH 224	120	115	53	12	4	M130x2	0.679
AH 226	130	125	53	12	4	M140x2	0.725
AH 228	140	135	56	13	5	M150x2	0.818
AH 230	150	145	60	14	5	M160x3	0.963
AH 232	160	150	64	15	5	M170x3	1.70
AH 234	170	160	69	16	5	M180x3	1.98
AH 236	180	170	69	16	5	M190x3	2.14
AH 238	190	180	73	17	5	Tr205x4	2.52
AH 240	200	190	77	18	5	Tr215x4	2.87
AH 244	220	200	85	18	6	Tr235x4	5.49
AH 248	240	220	96	22	6	Tr260x4	7.34
AH 252	260	240	105	23	6	Tr280x4	8.80
AH 256	280	260	105	23	8	Tr300x4	9.42
AH 308	40	35	29	6	3	M 45x1.5	0.090
AH 309	45	40	31	6	3	M 50x1.5	0.109
AHX 310	50	45	35	7	3	M 55x2	0.137
AHX 311	55	50	37	7	3	M 60x2	0.161
AHX 312	60	55	40	8	3	M 65x2	0.189
AH 313	65	60	42	8	3	M 75x2	0.253
AH 314	70	65	43	8	4	M 80x2	0.280
AH 315	75	70	45	8	4	M 85x2	0.313
AH 316	80	75	48	8	4	M 90x2	0.365
AHX 317	85	80	52	9	4	M 95x2	0.429
AHX 318	90	85	53	9	4	M100x2	0.461
AHX 319	95	90	57	10	4	M105x2	0.532
AHX 320	100	95	59	10	4	M110x2	0.582
AHX 322	110	105	63	12	4	M120x2	0.663
AHX 324	120	115	69	13	4	M130x2	0.866
AHX 326	130	125	74	14	4	M140x2	1.02
AHX 328	140	135	77	14	5	M150x2	1.16
AHX 330	150	145	83	15	5	M165x3	1.50
AH 332	160	150	88	16	5	M180x3	2.69
AH 334	170	160	93	17	5	M190x3	3.07
AH 2308	40	35	40	7	3	M 45x1.5	0.128
AH 2309	45	40	44	7	3	M 50x1.5	0.164

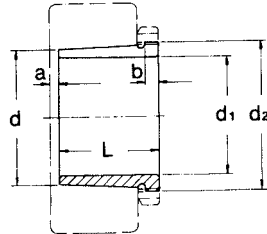
No.	d	d ₁	L	b	a	d ₂	Weight (kg)
AHX 2310	50	45	50	9	3	M 55x2	0.209
AHX 2311	55	50	54	10	3	M 60x2	0.253
AHX 2312	60	55	58	11	3	M 65x2	0.297
AH 2313	65	60	61	12	3	M 75x2	0.395
AHX 2314	70	65	64	12	4	M 80x2	0.466
AHX 2315	75	70	68	12	4	M 85x2	0.534
AHX 2316	80	75	71	12	4	M 90x2	0.597
AHX 2317	85	80	74	13	4	M 95x2	0.670
AHX 2318	90	85	79	14	4	M100x2	0.779
AHX 2319	95	90	85	16	4	M105x2	0.886
AHX 2320	100	95	90	16	4	M110x2	0.998
AHX 2322	110	105	98	16	4	M125x2	3.35
AHX 2324	120	115	105	17	4	M135x2	1.60
AHX 2326	130	125	115	19	4	M145x2	1.97
AHX 2328	140	135	125	20	5	M155x3	2.33
AHX 2330	150	145	135	24	5	M165x3	2.82
AH 2332	160	150	140	24	6	M180x3	4.72
AH 2334	170	160	146	24	6	M190x3	5.25
AH 2336	180	170	154	26	6	M200x3	5.83
AH 2338	190	180	160	26	7	Tr210x4	6.63
AH 2340	200	190	170	30	7	Tr220x4	7.54
AH 2344	220	200	181	30	8	Tr240x4	13.5
AH 2348	240	220	189	30	8	Tr260x4	15.5
AH 2352	260	240	205	30	8	Tr290x4	19.6
AH 2356	280	260	212	30	8	Tr310x5	21.6
AHX 3024	120	115	60	13	4	M130x2	0.750
AHX 3026	130	125	67	14	4	M140x2	0.930
AHX 3028	140	135	68	14	5	M150x2	1.01
AHX 3030	150	145	72	15	5	M160x3	1.15
AH 3032	160	150	77	16	5	M170x3	2.06
AH 3034	170	160	85	17	5	M180x3	2.43
AH 3036	180	170	92	17	6	M190x3	2.81
AH 3038	190	180	96	18	6	Tr205x4	3.32
AH 3040	200	190	102	19	6	Tr215x4	3.80
AH 3044	220	200	111	20	6	Tr235x4	7.40
AH 3048	240	220	116	21	7	Tr260x4	8.75
AH 3052	260	240	128	23	7	Tr280x4	10.7
AH 3056	280	260	131	24	8	Tr300x4	12.0
AH 3060	300	280	145	26	8	Tr320x5	14.4
AH 3064	320	300	149	27	8	Tr345x5	16.0
AH 3068	340	320	162	28	9	Tr365x5	19.5
AH 3072	360	340	167	30	9	Tr385x5	21.0
AH 3076	380	360	170	31	10	Tr410x5	23.2
AH 3080	400	380	183	33	10	Tr430x5	27.3
AH 3084	420	400	186	34	10	Tr450x5	29.0
AHX 3088	440	420	194	35	11	Tr470x5	32.0
AHX 3092	460	440	202	37	11	Tr490x5	35.2
AHX 3096	480	460	205	38	12	Tr520x6	39.2

• Larger size is also available.

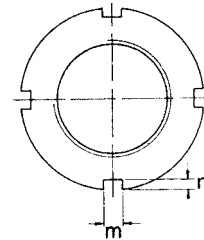
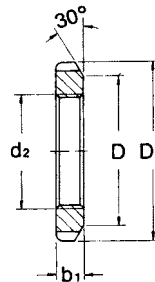
Series: AH31



AH22, AH32



Series: AN/KM



mm

No.	d	d ₁	L	b	a	d ₂	Weight (kg)
AHX 3120	100	95	64	11	4	M110x2	0.650
AHX 3122	110	105	68	11	4	M120x2	0.760
AHX 3124	120	115	75	12	4	M130x2	0.950
AHX 3126	130	125	78	12	4	M140x2	1.08
AHX 3128	140	135	83	14	5	M150x2	1.28
AHX 3130	150	145	96	15	5	M165x3	1.79
AH 3132	160	150	103	16	5	M180x3	3.21
AH 3134	170	160	104	16	5	M190x3	3.40
AH 3136	180	170	116	19	6	M200x3	4.22
AH 3138	190	180	125	20	6	Tr210x4	4.89
AH 3140	200	190	134	21	6	Tr220x4	5.49
AH 3144	220	200	145	23	6	Tr240x4	10.4
AH 3148	240	220	154	25	7	Tr260x4	12.0
AH 3152	260	240	172	26	7	Tr290x4	16.2
AH 3156	280	260	175	28	8	Tr310x5	17.5
AH 3160	300	280	192	30	8	Tr330x5	20.8
AH 3164	320	300	209	31	8	Tr350x5	24.5
AH 3168	340	320	225	33	9	Tr370x5	29.0
AH 3172	360	340	229	35	9	Tr400x5	33.0
AH 3176	380	360	232	36	10	Tr420x5	35.7
AH 3180	400	380	240	38	10	Tr440x5	39.5
AH 3184	420	400	266	40	10	Tr460x5	46.5
AHX 3188	440	420	270	42	11	Tr480x5	49.8
AHX 3192	460	440	285	43	11	Tr510x6	57.9
AHX 3196	480	460	295	45	12	Tr530x6	63.1
AHX 3218	90	85	63	10	4	M100x2	0.576
AHX 3219	95	90	67	11	4	M105x2	0.655
AHX 3220	100	95	73	11	4	M110x2	0.767
AHX 3222	110	105	82	11	4	M125x2	1.04
AHX 3224	120	115	90	13	4	M135x2	1.30
AHX 3226	130	125	98	15	4	M145x2	1.58
AHX 3228	140	135	104	15	5	M155x3	1.84
AHX 3230	150	145	114	17	5	M165x3	2.22
AH 3232	160	150	124	20	6	M180x3	4.08
AH 3234	170	160	134	24	6	M190x3	4.80
AH 3236	180	170	140	24	6	M200x3	5.32
AH 3238	190	180	145	25	7	Tr210x4	5.90
AH 3240	200	190	153	25	7	Tr220x4	6.68
AH 3260	300	280	228	34	8	Tr330x5	26.0
AH 3264	320	300	246	36	8	Tr350x5	30.6
AH 2236	180	170	105	17	5	M200x3	3.73
AH 2238	190	180	112	18	5	Tr210x4	4.25
AH 2240	200	190	118	19	5	Tr220x4	4.68
AH 2244	220	200	130	20	6	Tr240x4	9.10
AH 2248	240	220	144	21	6	Tr260x4	11.1
AH 2252	260	240	155	23	6	Tr290x4	14.0
AH 2256	280	260	155	24	8	Tr310x5	15.2
AH 2260	300	280	170	26	8	Tr330x5	18.1
AH 2264	320	300	180	27	10	Tr350x5	20.2

No.	d ₂	D ₁	b ₁	D	m	n	Weight (kg)
AN/KM0	M 10x0.75	18	4	13.5	3	2	0.004
AN/KM1	M 12x1	22	4	17	3	2	0.007
AN/KM2	M 15x1	25	5	21	4	2	0.010
AN/KM3	M 17x1	28	5	24	4	2	0.013
AN/KM4	M 20x1	32	6	26	4	2	0.019
AN/KM5	M 25x1.5	38	7	32	5	2	0.025
AN/KM6	M 30x1.5	45	7	38	5	2	0.043
AN/KM7	M 35x1.5	52	8	44	5	2	0.053
AN/KM8	M 40x1.5	58	9	50	6	2.5	0.085
AN/KM9	M 45x1.5	65	10	56	6	2.5	0.119
AN/KM10	M 50x1.5	70	11	61	6	2.5	0.148
AN/KM11	M 55x2	75	11	67	7	3	0.158
AN/KM12	M 60x2	80	11	73	7	3	0.174
AN/KM13	M 65x2	85	12	79	7	3	0.203
AN/KM14	M 70x2	92	12	85	8	3.5	0.242
AN/KM15	M 75x2	98	13	90	8	3.5	0.287
AN/KM16	M 80x2	105	15	95	8	3.5	0.397
AN/KM17	M 85x2	110	16	102	8	3.5	0.451
AN/KM18	M 90x2	120	16	108	10	4	0.556
AN/KM19	M 95x2	125	17	113	10	4	0.658
AN/KM20	M100x2	130	18	120	10	4	0.698
AN/KM21	M105x2	140	18	126	12	5	0.845
AN/KM22	M110x2	145	19	133	12	5	0.965
AN/KM23	M115x2	150	19	137	12	5	1.01
AN/KM24	M120x2	155	20	138	12	5	1.08
AN/KM25	M125x2	160	21	148	12	5	1.19
AN/KM26	M130x2	165	21	149	12	5	1.25
AN/KM27	M135x2	175	22	160	14	6	1.55
AN/KM28	M140x2	180	22	160	14	6	1.56
AN/KM29	M145x2	190	24	172	14	6	1.80
AN/KM30	M150x2	195	24	171	14	6	2.03
AN/KM31	M155x3	200	25	182	16	7	2.30
AN/KM32	M160x3	210	25	182	16	7	2.59
AN/KM33	M165x3	210	26	193	16	7	2.70
AN/KM34	M170x3	220	26	193	16	7	2.80
AN/KM36	M180x3	230	27	203	18	8	3.07
AN/KM38	M190x3	240	28	214	18	8	3.39
AN/KM40	M200x3	250	29	226	18	8	3.69
ANL/KML24	M120x2	145	20	135	12	5	0.780
ANL/KML26	M130x2	155	21	145	12	5	0.880
ANL/KML28	M140x2	165	22	155	12	5	0.990
ANL/KML30	M150x2	180	24	170	14	5	1.38
ANL/KML32	M160x3	190	25	180	14	5	1.56
ANL/KML34	M170x3	200	26	190	16	5	1.72
ANL/KML36	M180x3	210	27	200	16	5	1.95
ANL/KML38	M190x3	220	28	210	16	5	2.08
ANL/KML40	M200x3	240	29	222	18	8	2.98

• Larger size is also available.